

2023 GA-FL Ocean Challenge

SAILING INSTRUCTIONS

1 RULES

- 1.1 The 2023 GA-FL Ocean Challenge race shall be governed by The Racing Rules of Sailing 2021-2024, except as modified by the Notice of Race and these Sailing Instructions. The Amelia Island Sailing Club is the Organizing Authority for this race.
- 1.2 Rule 42.3(h) is changed to allow the use of the engine to get clear after grounding or collision and, in accordance with Rule 42.3(i), if a collision is imminent the engine may be used just long enough to avert the collision provided the boat does not gain a significant advantage in the race. The appropriate penalty for the collision that was averted is still required. In addition, Rule 42 is changed to allow engine use with a motoring penalty as described in Paragraph 8 below.
- 1.3 Rule 52 is changed so that races may be sailed with the assistance of self-steering gear, electric or wind.

2 CHANGES TO SAILING INSTRUCTIONS - Any changes to the Sailing Instructions will be announced at the Skippers' Meeting and/or on the water over VHF Channel 72.

3 SCHEDULE

EVENT:	DATE:	TIME:	LOCATION:
Skippers' Meeting *	Friday, October 06	7:00 PM	Morningstar Marina
Roll Call	Saturday, October 07	8:45 AM	VHF Channel 72
Start of Race	Saturday, October 07	9:00 AM	St. Simon's Channel
Awards Ceremony	Saturday, October 07	7:00 PM	Fernandina Harbor Marina

* NOTE: If you do not plan to attend the Skippers' Meeting, please advise the Race Committee via text or email on Friday prior to 7:00 PM that you will participate in the race and confirm your class - Spinnaker or non-Spinnaker - so we will know who to expect for the 8:45 AM roll call on Saturday:

- Text to Cathy Eichmann at (401) 440-4341 or email - cathyeich@gmail.com

4 COURSE

- 4.1 The approximate racecourse distance is 26.0 nautical miles.
- 4.2 **Start Line** - An imaginary line between Green markers "3" and "5" in the St. Simons Channel.
- 4.3 **Turn 1** - At St. Marys Channel, yachts must leave Red marker "12" (N 30°42'70" / W 81°22'39") to starboard.
- 4.4 **Finish Line** - An imaginary line between Yellow markers "C" and "D" in the St. Marys Channel (east end of the Turning Basin).

5 START

- 5.1 The race will be started using a 5-minute sequence.
- 5.2 Horn signals will be broadcast over VHF Channel 72.

Warning Signal	Horn	5 min to start – ENGINES OFF
Preparatory Signal	Horn	4 min to start
One-minute Signal	Horn	1 min to start
Start Signal	Horn	Start

6 FINISH

- 6.1 A yacht finishes when, after starting, any part of her hull crosses the finish line from the course side, regardless of when its crew, sails or other equipment crosses the line. Bowsprits and other pieces of equipment attached to the hull are not part of the hull.
- 6.2 Record your own finish time USING YOUR GPS.
- 6.3 Report your time to the Race Committee via text or by email:
- Text to Cathy Eichmann at (401) 440-4341 or email - cathyeich@gmail.com

7 TIME LIMIT

- 7.1 The race ends at 6:00 PM. Yachts finishing after that time will be scored Did Not Finish (DNF). This changes RRS 35.
- 7.2 Yachts withdrawing from the race before finishing shall notify the Race Committee by text or email:
- Text to Cathy Eichmann at (401) 440-4341 or email – cathyeich@gmail.com

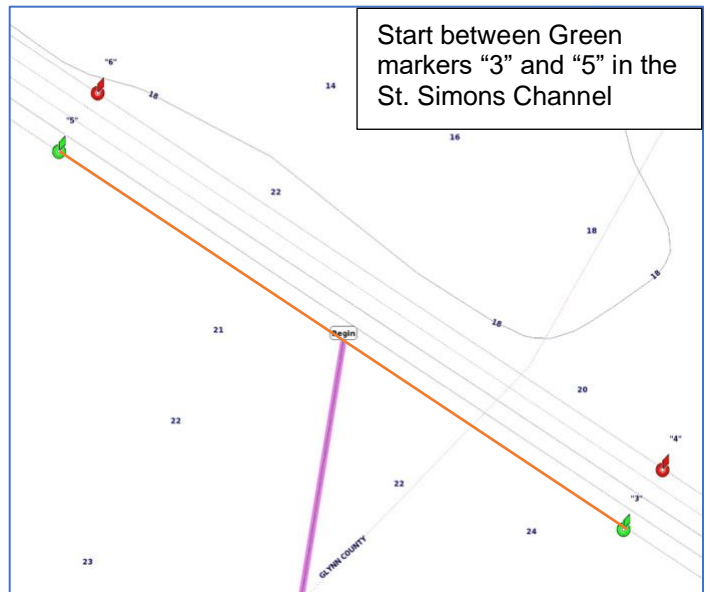
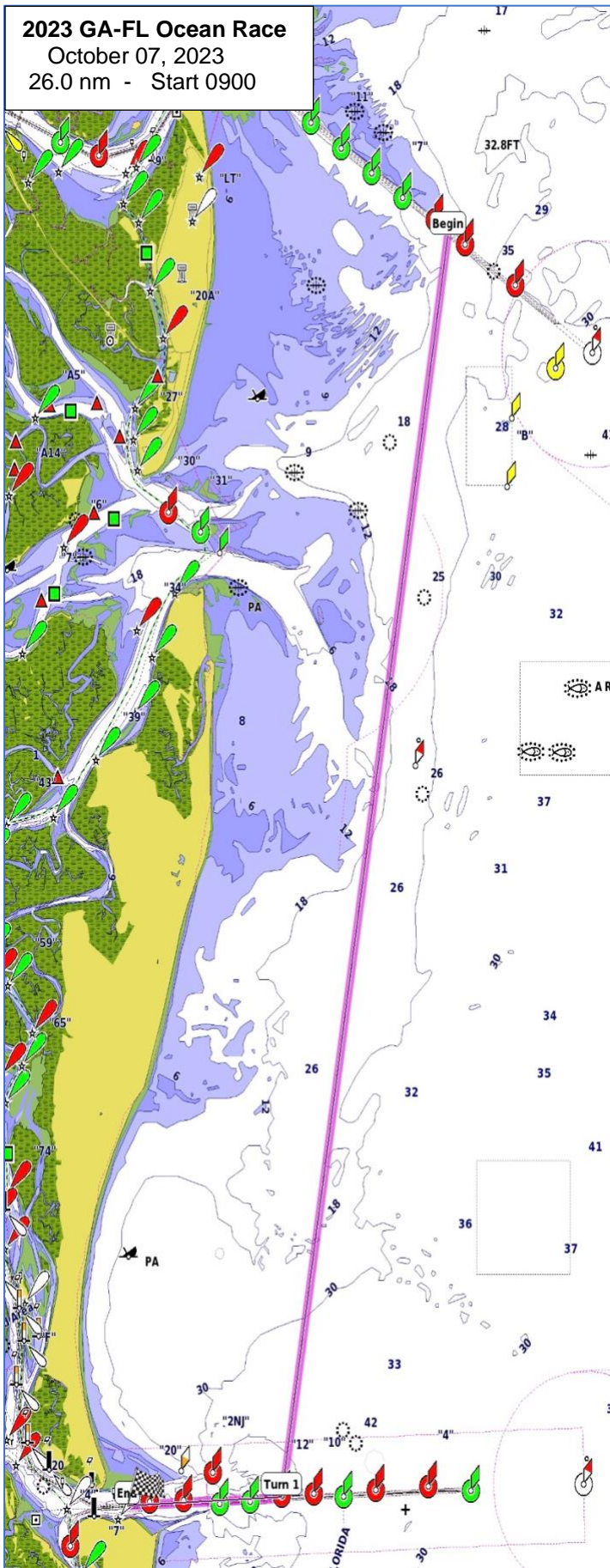
8 MOTORING PENALTY

- 8.1 So that yachts may finish within the time limit in the event of unfavorable wind or current, the engine may be used for propulsion with the following stipulations.
- 8.2 Motoring is allowed no sooner than 30 minutes after the start of the race, and any time thereafter. A vessel's speed in knots may not exceed its hull speed while the engine is in gear propelling the boat. Hull speed is defined as $1.34 \times \text{Square Root (LWL)}$, where "LWL" is the length of the waterline in feet.
- 8.3 The skipper shall record the GPS Latitude and Longitude position of the boat and the GPS time on each occasion when the engine was put in gear and was taken out of gear. A minimum of 30 minutes shall be recorded each time the engine is put in gear.
- 8.4 Record the total engine in-gear propulsion time (Motoring Time) in MINUTES and report that value to the Race Committee with your finish time.
- Text to Cathy Eichmann at (401) 440-4341 or email – cathyeich@gmail.com
- 8.5 A motoring penalty equal to $(0.40 \times \text{Square Root (LWL)} \times \text{Motoring Time})$ will be added to the corrected finish time.

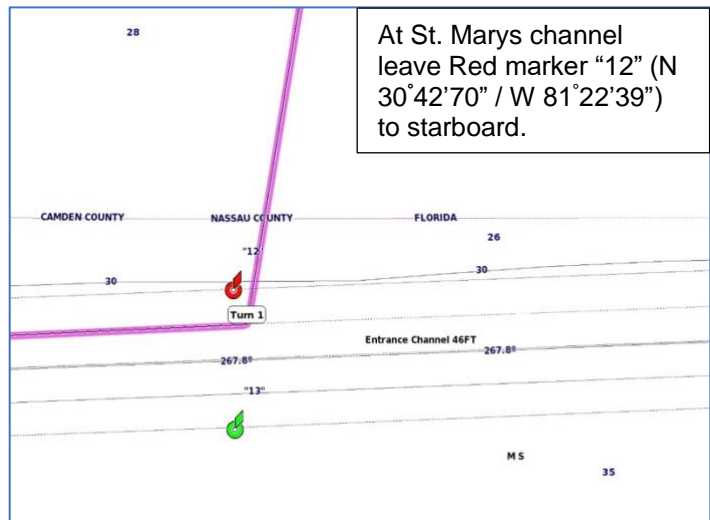
9 SCORING

- 9.1 The Low Point Scoring System, rule A4, will apply.
- 9.2 The PHRF Handicap System will be used for calculation of corrected finish times.
- 9.3 Individual boats placing first, second and third in each class will receive awards.
- 9.4 A winning club will be determined based on the adding the top finish places of an equal number of boats from each club in each class. The club with the lowest total score is the club winner.

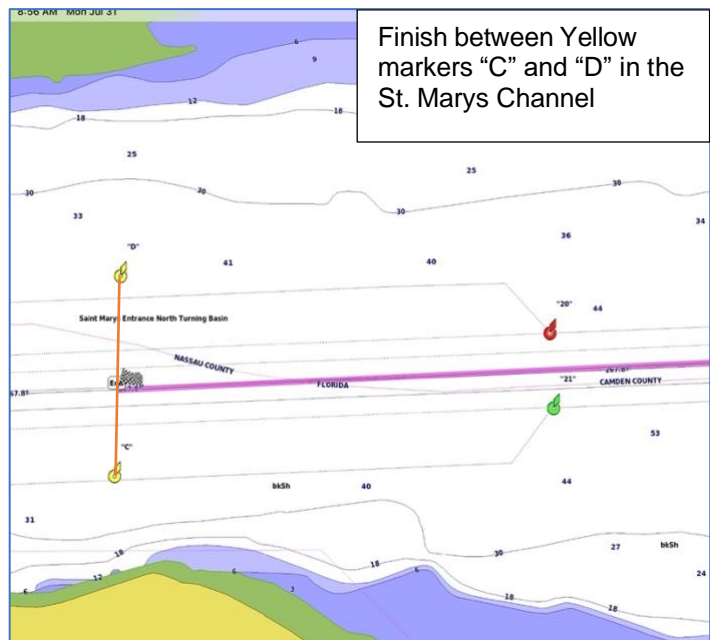
2023 GA-FL Ocean Race
 October 07, 2023
 26.0 nm - Start 0900



Start between Green markers "3" and "5" in the St. Simons Channel



At St. Marys channel leave Red marker "12" (N 30°42'70" / W 81°22'39") to starboard.



Finish between Yellow markers "C" and "D" in the St. Marys Channel